



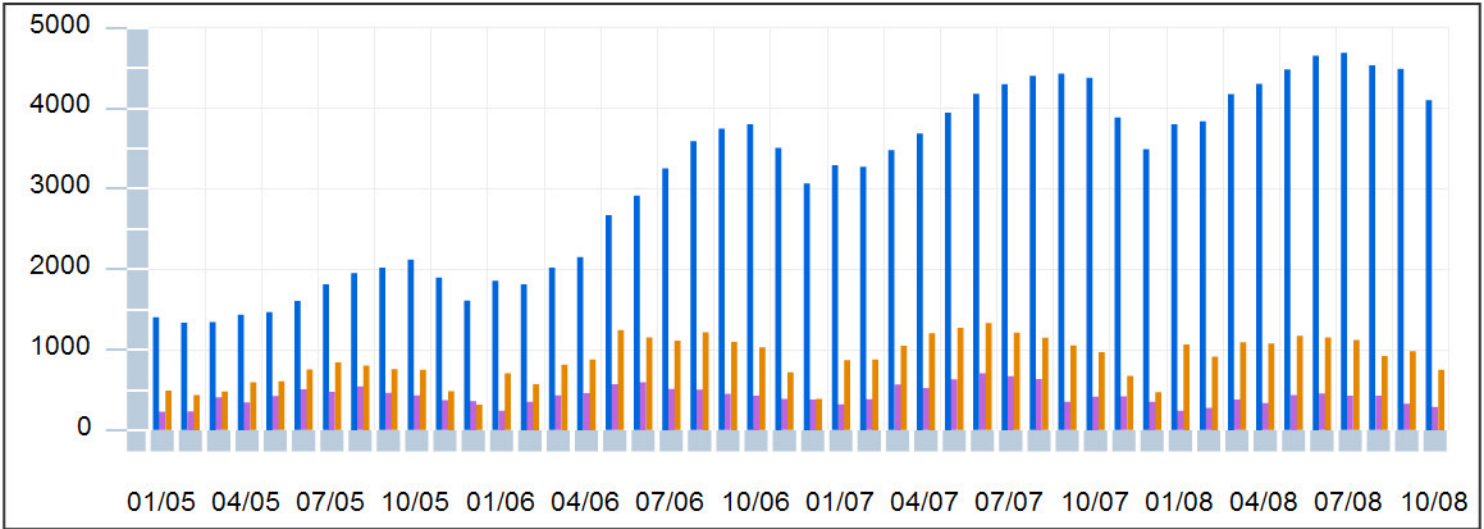
Portland

SUPPLY & DEMAND

1/01/2005 - 12/01/2008

\$300,000 - \$5,000,000

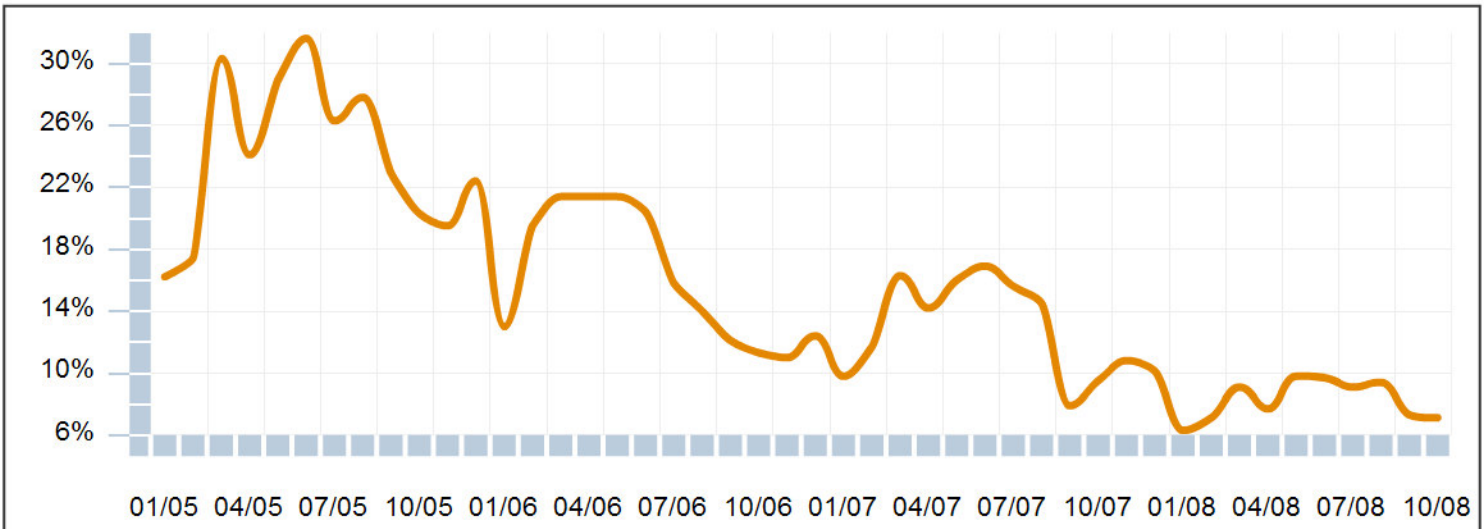
■ Active ■ Sold ■ New



The Supply & Demand chart is a bar graph that shows the number of listings on the Y-axis that were active at any point during the month displayed on the X-axis. This may differ from other organizations' charts that display a snapshot of the market at a point in time, such as the number of listings active on the first day of the month. You may also display the number of listings that were sold, new listings that were added, listings that went pending, listings that expired, or listings that were withdrawn during the month.

ABSORPTION RATE

\$300,000 - \$5,000,000



The Absorption Rate chart shows a line graph of the percentage of active listings that sold on the Y-axis in the month displayed on the X-axis. As with the Supply and Demand chart, the number of active listings are ones that were active at any point during the month.





Market Analyzer

Neighborhood Market Trends

Paul Kerkar
CRS, GRI
RE/MAX Equity Group
503-516-5783
paulkerkar@remax.net



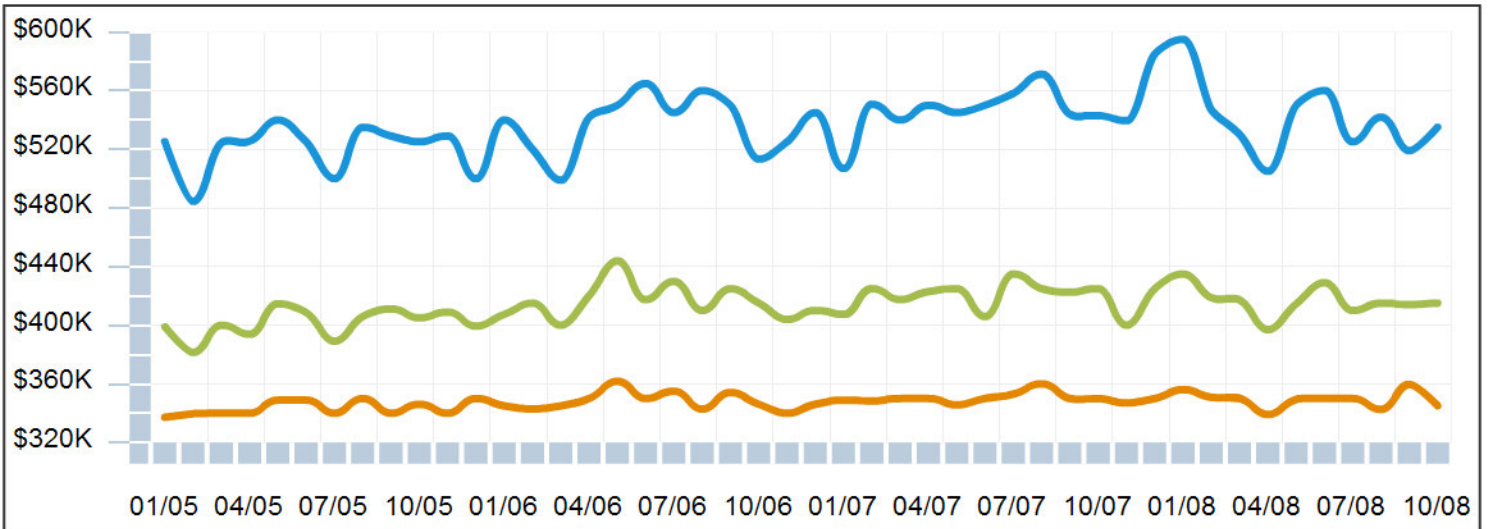
Portland

MEDIAN PRICE

1/01/2005 - 12/01/2008

■ 25th Percentile ■ Median ■ 75th Percentile

\$300,000 - \$5,000,000

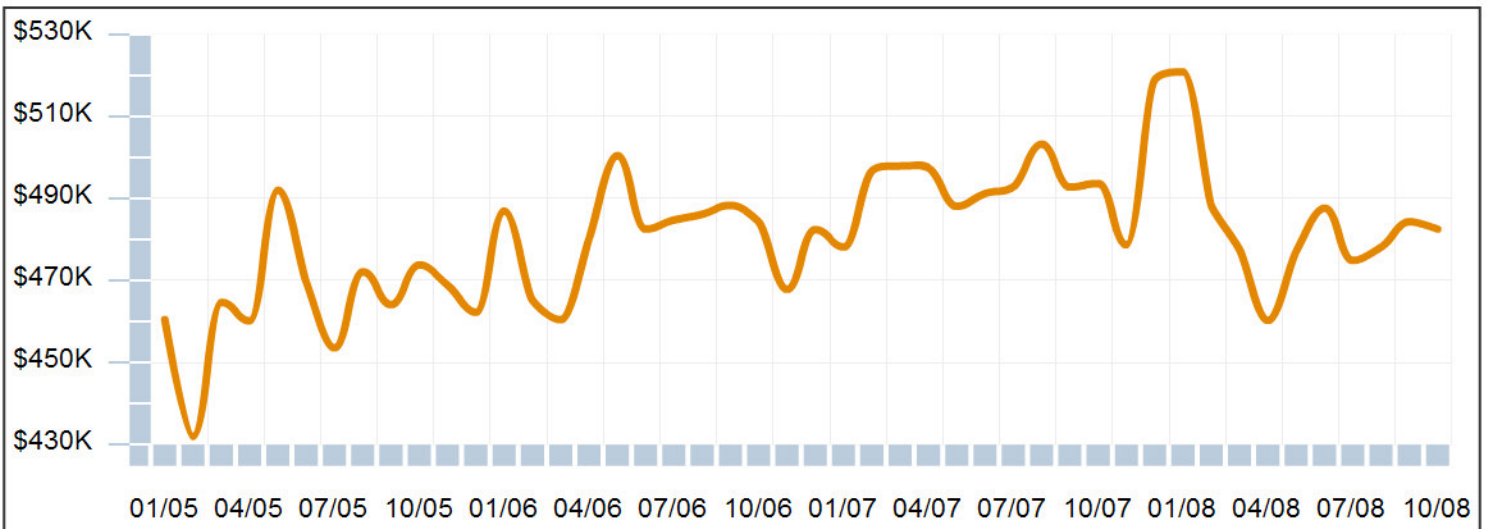


The Median Price chart displays the 25th percentile, median, and 75th percentile sold price on the Y-axis along with its corresponding month on the X-axis.

AVERAGE SOLD PRICE

1/01/2005 - 12/01/2008

\$300,000 - \$5,000,000



The Average Sold Price chart displays the average sold list price on the Y-axis by month on the X-axis.





Market Analyzer

Neighborhood Market Trends

Paul Kerkar
CRS, GRI
RE/MAX Equity Group
503-516-5783
paulkerkar@remax.net

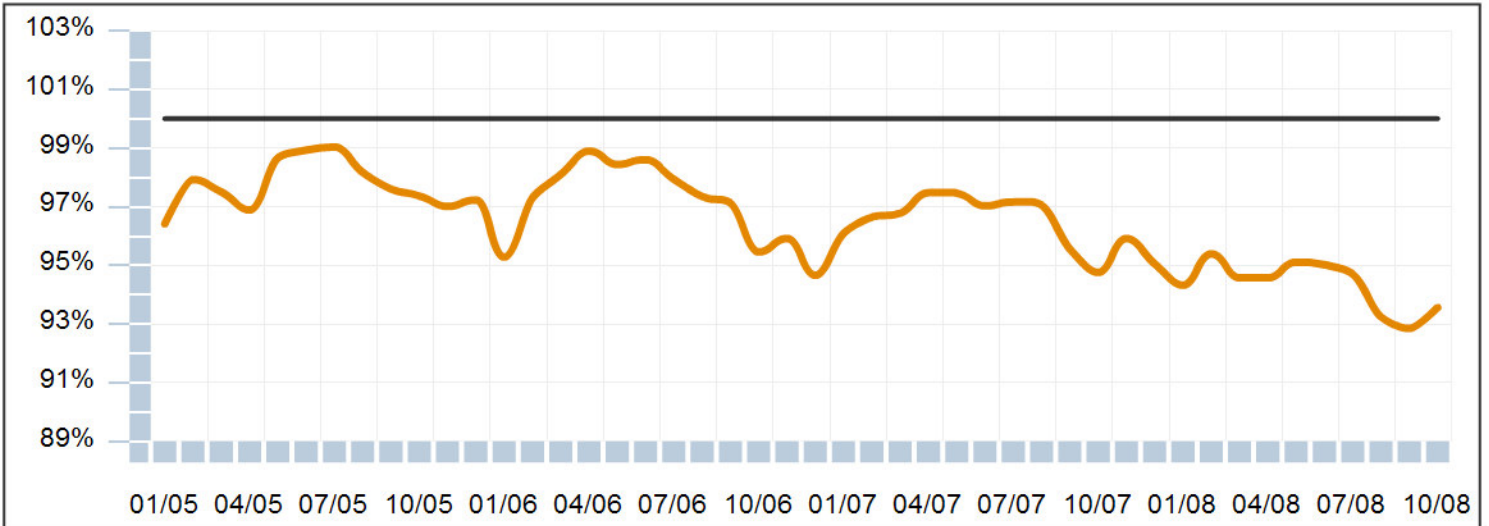


Portland

SOLD / ORIGINAL LIST PRICE

1/01/2005 - 12/01/2008

\$300,000 - \$5,000,000



The Sold /Original List Price chart displays a ratio of the average sold list price by the average original list price on the Y-axis with month displayed on the X-axis. Also displayed on the chart is a highlighted baseline at 100%.





Market Analyzer

Neighborhood Market Trends

Paul Kerkar
CRS, GRI
RE/MAX Equity Group
503-516-5783
paulkerkar@remax.net



Portland

SEARCH CRITERIA:

1/01/2005 - 12/01/2008

\$300,000 - \$5,000,000

Portland City Center: All neighborhoods

North Portland: All neighborhoods

Inner NE Portland: All neighborhoods

SW Portland / Beaverton: All neighborhoods

NW Portland: All neighborhoods

SW Portland: All neighborhoods

Inner SE Portland: All neighborhoods

Outer NW Portland: All neighborhoods